

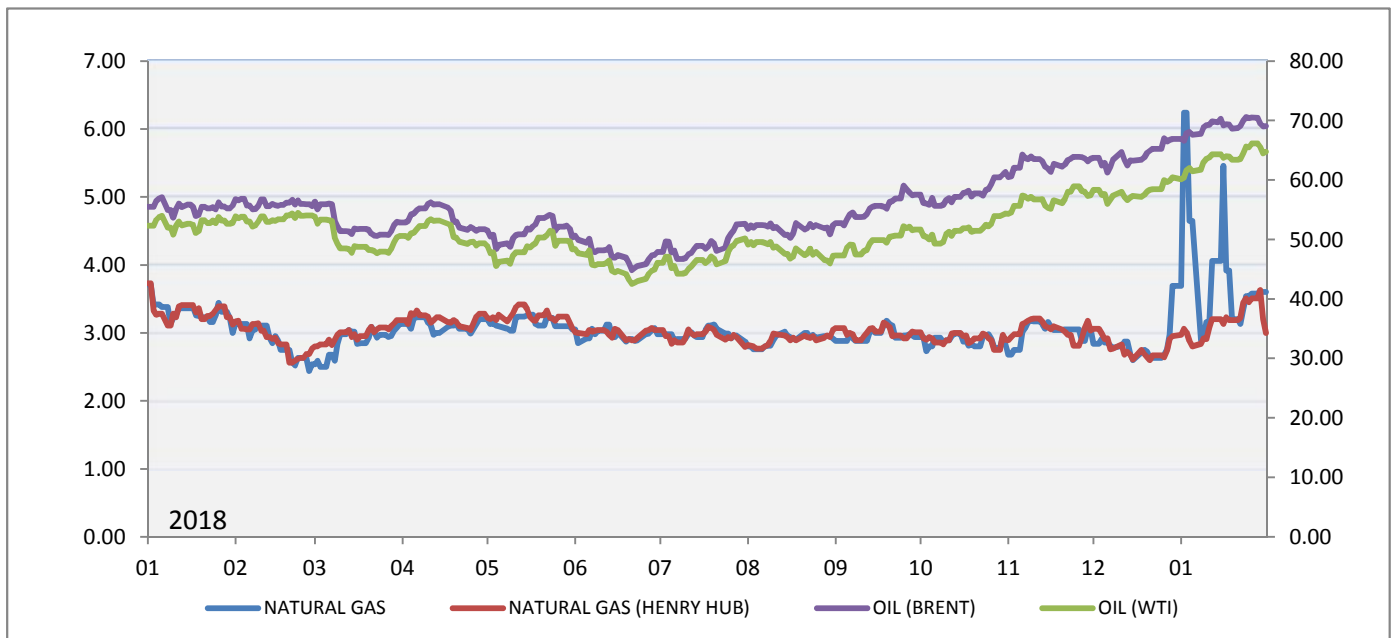
Monthly change

31 January 2018

BLOOMBERG ENERGY 39.82 ↑ 1.80 4.74%	IFRC ENERGY 3,146 ↓ -51.25 -1.60%	IFRC ALL SHARE 13,534 ↑ 1447.17 11.97%	S&P 500 2,824 ↑ 150.20 5.62%
US DOLLAR INDEX 89.07 ↓ -3.21 -3.48%	USD / VND 22,705 ↑ 7.00 0.03%	USD / EUR 0.81 ↓ -0.03 -3.34%	GOLD 1,345 ↑ 42.20 3.24%
OIL (WTI) 64.73 ↑ 4.31 7.13%	OIL (BRENT) 69.05 ↑ 2.18 3.26%	NATURAL GAS 3.60 ↓ -0.09 -2.44%	NATURAL GAS (HENRY HUB) 3.00 ↑ 0.05 1.69%

Energy Futures Prices

Continuous C1 contract



World Oil

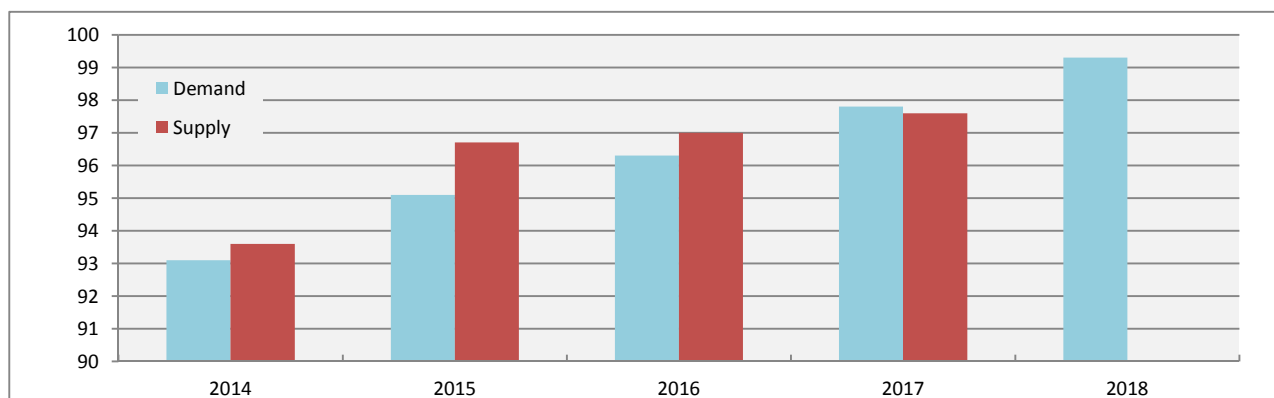
Source U.S. Energy Information Administration (EIA), million barrels per day

Demand 2015 95.10 ↑	Demand 2016 96.30 ↑	Demand 2017 97.80 ↑	Demand 2018 99.30 ↑
Period Q1 2018	Total Demand 98.00 ↑	Total Supply 96.80 ↑	Total Stock -1.20 ↓

ENERGY MONTHLY REPORT

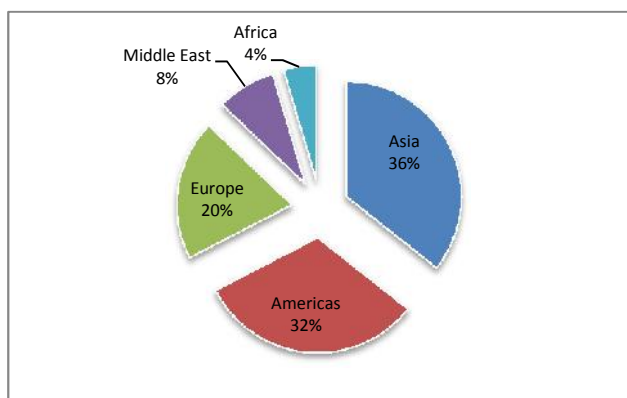
World Oil	2014	2015	2016				Year
			Q1	Q2	Q3	Q4	
OIL DEMAND							
OECD	45.80	46.50	46.80	46.10	47.30	47.40	46.80
Americas	24.20	24.60	24.60	24.50	25.10	24.80	24.70
Europe	13.50	13.80	13.60	13.90	14.40	14.20	14.00
Asia Oceania	8.10	8.10	8.60	7.70	7.80	8.40	8.10
NON OECD	47.30	48.60	48.80	49.70	49.50	49.40	49.50
FSU	4.60	4.50	4.60	4.60	4.90	4.90	4.80
Europe	0.70	0.70	0.70	0.70	0.70	0.70	0.70
China	10.80	11.60	11.80	12.10	11.60	11.90	11.90
Other Asia	11.80	12.40	13.00	13.00	12.70	13.00	12.90
Americas	6.90	6.70	6.50	6.60	6.70	6.50	6.60
Middle East	8.40	8.40	7.90	8.40	8.70	8.10	8.30
Africa	4.10	4.30	4.30	4.30	4.20	4.30	4.30
TOTAL OIL DEMAND	93.10	95.10	95.60	95.80	96.80	96.80	96.30
OIL SUPPLY							
OECD	22.90	24.00	23.90	22.80	23.00	23.70	23.40
America	19.10	20.00	19.90	19.00	19.30	19.70	19.50
Europe	3.30	3.50	3.60	3.40	3.30	3.60	3.50
Asia Oceania	0.50	0.50	0.40	0.40	0.40	0.40	0.40
Non-OECD	29.20	29.80	29.50	29.10	29.10	29.70	29.40
FSU	13.90	14.10	14.30	14.10	14.00	14.60	14.20
Europe	0.10	0.10	0.10	0.10	0.10	0.10	0.10
China	4.20	4.30	4.10	4.00	3.90	3.90	4.00
Other Asia	3.50	3.60	3.70	3.60	3.50	3.50	3.60
America	4.40	4.60	4.30	4.40	4.60	4.60	4.50
Middle East	1.30	1.30	1.30	1.30	1.30	1.30	1.30
Africa	1.80	1.80	1.70	1.60	1.70	1.70	1.70
Processing gains	2.20	2.20	2.30	2.30	2.30	2.30	2.30
Global Biofuels	2.20	2.30	1.90	2.50	2.70	2.30	2.30
TOTAL OPEC	37.10	38.40	38.90	39.30	39.80	40.20	39.60
TOTAL OIL SUPPLY	93.60	96.70	96.50	96.00	96.90	98.20	97.00
STOCK CHANGE	0.50	1.60	0.90	0.20	0.10	1.40	0.70

Balance of Supply and Demand

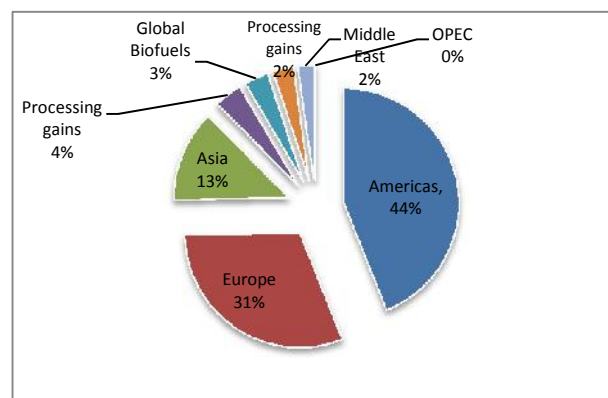


	2017					2018				
	Q1	Q2	Q3	Q4	Year	Q1	Q2	Q3	Q4	Year
OIL DEMAND										
OECD	47.00 ↑	47.10 ↑	47.60 ↑	47.50 ↑	47.30 ↑	47.00	46.90 ↓	47.70 ↑	47.50 ↑	47.30
Americas	24.50 ↓	25.00 ↑	25.00 ↓	24.90 ↑	24.80 ↑	24.60 ↑	25.00	25.20 ↑	25.10 ↑	25.00 ↑
Europe	13.90 ↑	14.30 ↑	14.70 ↑	14.20	14.30 ↑	13.90	14.30	14.80 ↑	14.30 ↑	14.30
Asia Oceania	8.60	7.80 ↑	7.90 ↑	8.40	8.20 ↑	8.50 ↓	7.60 ↓	7.70 ↓	8.10 ↓	8.00 ↓
NON OECD	49.60 ↑	50.90 ↑	50.80 ↑	50.70 ↑	50.50 ↑	50.90 ↑	52.10 ↑	52.10 ↑	52.50 ↑	52.00 ↑
FSU	4.60	4.70 ↑	5.00 ↑	4.90	4.80	4.70 ↑	4.80 ↑	5.10 ↑	5.00 ↑	4.90 ↑
Europe	0.70	0.70	0.80 ↑	0.70	0.70	0.70	0.80 ↑	0.80	0.80 ↑	0.80 ↑
China	12.50 ↑	12.60 ↑	12.20 ↑	12.70 ↑	12.50 ↑	12.80 ↑	12.90 ↑	12.60 ↑	13.20 ↑	12.90 ↑
Other Asia	13.10 ↑	13.50 ↑	13.20 ↑	13.40 ↑	13.30 ↑	13.60 ↑	13.90 ↑	13.60 ↑	14.00 ↑	13.80 ↑
Americas	6.40 ↓	6.60	6.70	6.60 ↑	6.60	6.50 ↑	6.70 ↑	6.80 ↑	6.70 ↑	6.70 ↑
Middle East	7.90	8.50 ↑	8.70	8.00 ↓	8.30	8.10 ↑	8.60 ↑	8.90 ↑	8.30 ↑	8.50 ↑
Africa	4.40 ↑	4.30	4.20	4.40 ↑	4.30	4.50 ↑	4.40 ↑	4.30 ↑	4.50 ↑	4.40 ↑
TOTAL	96.60 ↑	98.00 ↑	98.40 ↑	98.20 ↑	97.80 ↑	97.90 ↑	99.00 ↑	99.80 ↑	100.00 ↑	99.30 ↑
OIL SUPPLY										
OECD	23.40 ↓	23.70 ↑	24.00 ↑	24.70 ↑	24.10 ↑	25.30 ↑	25.30 ↑	25.80 ↑	26.40 ↑	25.70 ↑
America	19.50 ↓	19.80 ↑	20.20 ↑	20.90 ↑	20.20 ↑	21.30 ↑	21.30 ↑	21.90 ↑	22.30 ↑	21.70 ↑
Europe	3.50 ↓	3.50 ↑	3.40 ↑	3.40 ↓	3.50	3.60 ↑	3.60 ↑	3.50 ↑	3.60 ↑	3.60 ↑
Asia Oceania	0.40	0.40	0.40	0.40	0.40	0.40	0.40	0.40	0.50 ↑	0.40
Non-OECD	29.50	29.20 ↑	29.00 ↓	29.30 ↓	29.30 ↓	29.30 ↓	29.40 ↑	29.40 ↑	29.40 ↑	29.40 ↑
FSU	14.50 ↑	14.40 ↑	14.30 ↑	14.40 ↓	14.40 ↑	14.40 ↓	14.40	14.40 ↑	14.5 ↑	14.4
Europe	0.10	0.10	0.10	0.10	0.10	0.10	0.10	0.10	0.10	0.10
China	3.90 ↓	3.90 ↓	3.80 ↓	3.80 ↓	3.90 ↓	3.80 ↓	3.80 ↓	3.80	3.70 ↓	3.80 ↓
Other Asia	3.50 ↓	3.40 ↓	3.40 ↓	3.40 ↓	3.50 ↓	3.40 ↓	3.30 ↓	3.30 ↓	3.30 ↓	3.30 ↓
America	4.60 ↑	4.50 ↑	4.50 ↓	4.60	4.50	4.60	4.70 ↑	4.70 ↑	4.80 ↑	4.70 ↑
Middle East	1.20 ↓	1.20 ↓	1.20 ↓	1.20 ↓	1.20 ↓	1.30 ↑	1.30 ↑	1.30 ↑	1.30 ↑	1.30 ↑
Africa	1.70	1.70 ↑	1.70	1.80 ↑	1.70	1.70	1.80 ↑	1.80 ↑	1.70 ↓	1.80 ↑
Processing gains	2.30	2.30	2.30	2.30	2.30	2.30	2.30	2.30	2.30	2.30
Global Biofuels	1.90	2.40 ↓	2.80 ↑	2.40 ↑	2.40 ↑	2.00 ↑	2.50 ↑	2.70 ↓	2.50 ↑	2.40
TOTAL OPEC	38.90	39.20 ↓	39.70	40.10	39.50					
TOTAL	96.00 ↓	96.80 ↑	97.80	98.80	97.60					
STOCK	-0.60 ↓	-1.20 ↓								

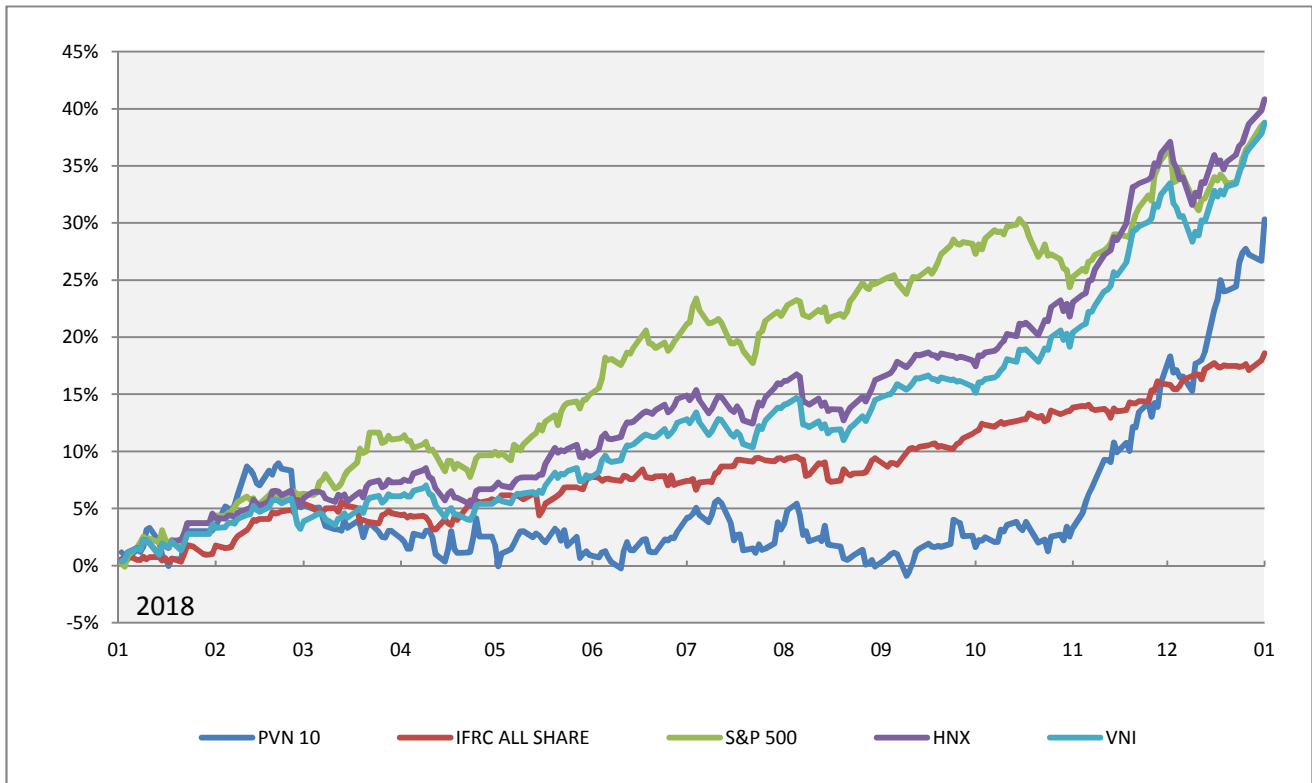
Demand (Q1 2018)



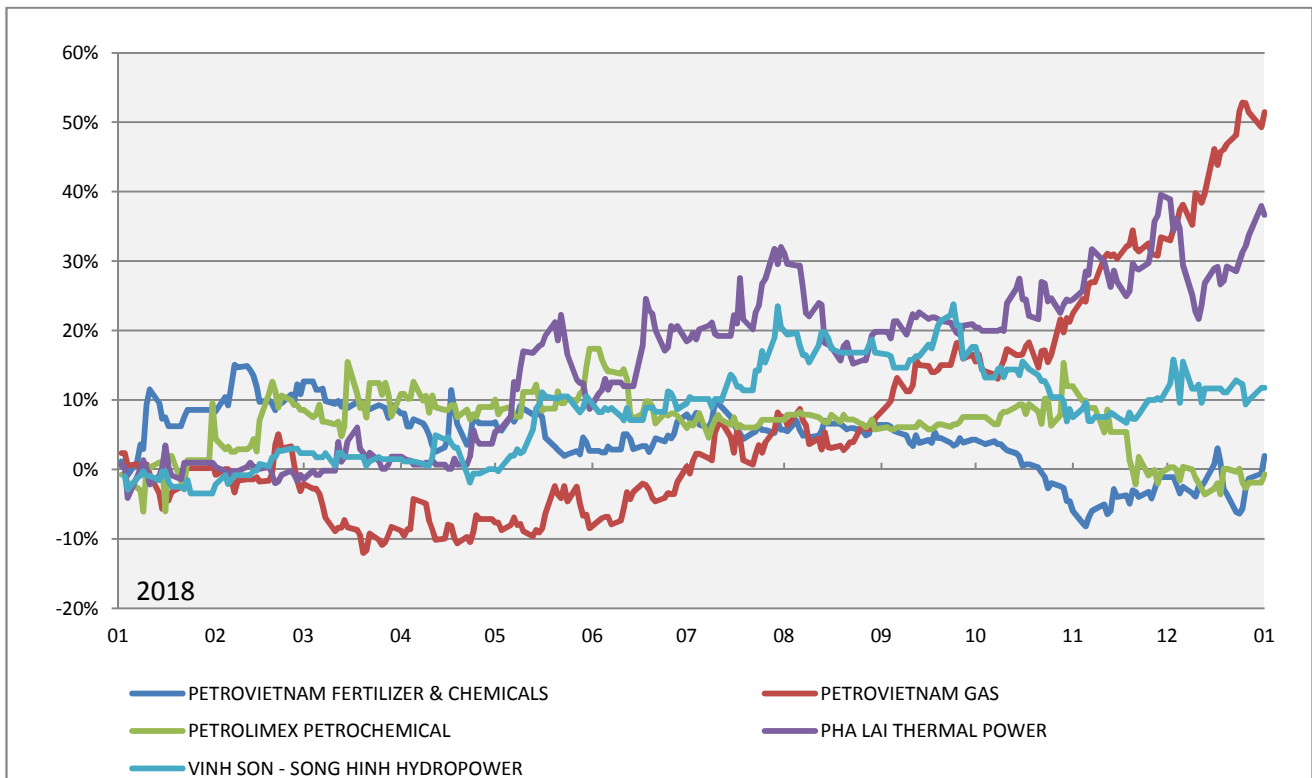
Supply (Q1 2018)



INDICES



STOCKS



Indexes		Variation						
		LAST	1M	2M	3M	6M	12M	
PVN INDEXES								
INDPVN10PRVND	PVN 10	1,101.22	↑	14.72%	14.03%	12.26%	-1.55%	2.48%
INDPVNASPRVND	PVN ALL-SHARE	1,861.23	↑	22.78%	18.10%	10.92%	-0.42%	1.32%
INDPVNACPRVND	PVN ALL-SHARE CONTINUOUS	1,747.59	↑	22.86%	18.14%	10.93%	-0.48%	1.31%
INDPVNHNPVND	PVN ALL-SHARE HNX	1,014.38	↑	15.76%	9.40%	12.76%	0.37%	2.74%
INDPVNHSPRVND	PVN ALL-SHARE HSX	1,870.16	↑	23.57%	19.09%	10.74%	-0.59%	1.14%
INDPVNBMPRVND	PVN BASIC MATERIALS	755.79	↑	6.30%	3.19%	1.37%	0.77%	5.10%
INDPVNCSPRVND	PVN CONSUMER SERVICES	658.27	↓	-7.29%	9.00%	4.00%	-6.16%	5.28%
INDPVNFIPRVND	PVN FINANCIALS	915.44	↑	16.37%	-8.88%	9.78%	-0.53%	-2.30%
INDPVNINPRVND	PVN INDUSTRIALS	712.40	↑	0.64%	10.58%	10.89%	-2.10%	3.37%
INDPVNOGPRVND	PVN OIL & GAS	1,821.13	↑	26.93%	22.52%	12.43%	0.25%	1.01%
INDPVNUTPRVND	PVN UTILITIES	1,258.01	↑	1.61%	3.02%	6.49%	-7.95%	0.22%
IFRC INDEXES								
INDVNX25PRVND	IFRC 25	3,853.53	↑	13.98%	5.52%	11.03%	0.70%	3.06%
INDVNX300PRVND	IFRC 300	4,440.99	↑	13.21%	6.78%	13.31%	-0.39%	1.80%
INDVNX50PRVND	IFRC 50	3,917.84	↑	12.58%	5.19%	11.48%	0.52%	3.73%
INDVNXASPRVND	IFRC ALL SHARE	13,534.12	↑	11.97%	5.07%	12.27%	0.19%	2.22%
INDVNXBNPRVND	IFRC BANKS	3,031.34	↑	23.12%	4.40%	18.61%	-3.04%	-2.38%
INDVNXBMPRVND	IFRC BASIC MATERIALS	2,440.49	↑	4.34%	2.69%	1.20%	1.86%	2.36%
INDVNXCGPRVND	IFRC CONSUMER GOODS	7,612.44	↑	3.82%	1.12%	4.02%	-8.22%	2.27%
INDVNXCSPRVND	IFRC CONSUMER SERVICES	7,422.58	↓	-4.57%	6.54%	6.25%	-3.63%	9.61%
INDVNXFIPRVND	IFRC FINANCE	4,400.63	↑	14.69%	5.60%	18.80%	3.74%	4.66%
INDVNXHCPRVND	IFRC HEALTHCARE	4,923.60	↓	-10.15%	1.97%	7.98%	-4.70%	4.17%
INDVNXINPRVND	IFRC INDUSTRIALS	4,919.01	↑	10.24%	1.73%	8.84%	0.95%	3.69%
INDVNXLGPRVND	IFRC LARGE 50	4,401.26	↑	14.83%	7.54%	14.53%	-0.22%	1.05%
INDVNXMDPRVND	IFRC MID 100	4,488.13	↑	3.28%	1.93%	7.86%	-1.37%	5.82%
INDVNXOGPRVND	IFRC OIL & GAS	2,365.82	↑	26.47%	22.10%	11.89%	0.25%	1.17%
INDVNXSMPRVND	IFRC SMALL 150	5,684.16	↑	0.25%	-0.12%	2.31%	-0.76%	5.50%
INDVNXTEPRVND	IFRC TECHNOLOGY	4,495.61	↑	1.90%	-2.70%	10.28%	4.43%	2.71%
INDVNXUTPRVND	IFRC UTILITY	1,645.08	↓	-1.94%	0.68%	6.12%	-7.25%	0.64%
VIETNAM MARKET INDEXES								
INDVHINDEX	HNX	125.90	↑	7.74%	1.87%	9.09%	2.67%	2.81%
INDHNX30	HNX30	252.67	↑	14.02%	0.53%	13.32%	2.49%	4.60%
INDVN30	VN30	1,095.90	↑	12.34%	3.44%	13.40%	1.83%	2.04%
INDVNINDEX	VNI	1,110.36	↑	12.81%	3.61%	13.45%	-0.10%	1.94%
INTERNATIONAL INDEXES								
INDVIX	S&P 500 VIX	13.54	↑	22.64%	-2.13%	10.81%	3.22%	7.76%
INDSPX	S&P 500	2,823.81	↑	5.62%	0.98%	2.81%	0.05%	3.72%
INDFTSE	FTSE 100	7,533.55	↓	-2.01%	4.93%	-2.22%	0.80%	2.31%
INDDAX	DAX	13,189.48	↑	2.10%	-0.82%	-1.55%	-0.52%	2.59%
INDCAC	CAC 40	5,481.93	↑	3.19%	-1.12%	-2.37%	-0.16%	2.31%
INDIBEX	IBEX 35	10,451.50	↑	4.06%	-1.64%	-2.97%	-1.93%	2.58%
INDN225	NIKKEI 225	23,098.29	↑	1.46%	0.18%	3.24%	-1.40%	0.41%
INDHSI	HANG SENG	32,887.27	↑	9.92%	2.54%	3.30%	2.37%	1.63%

Stocks		Variation						
		LAST	1M	2M	3M	6M	12M	
INTERNATIONAL STOCKS		31 January 2018						
STKINBP	BP PLC	-		-0.85%	-1.48%	-1.17%	-5.73%	
STKINNYSECVX	CHEVRON CORPORATION	125.35	↑	0.13%	5.21%	2.67%	-1.44%	1.03%
STKINSNP	CHINA PETROLEUM & CHEMICAL CORP	-		-1.12%	-2.09%	0.59%	-3.09%	
STKINNYSEXOM	EXXON MOBIL CORPORATION	87.52	↑	4.64%	0.42%	-0.07%	-4.64%	-3.06%
STKINNYSEPTR	PETROCHINA COMPANY LIMITED	79.02	↑	12.98%	3.55%	3.11%	-0.45%	-4.44%
STKINLONRDSA	ROYAL DUTCH SHELL PLC	2,462.50	↓	-0.71%	5.20%	-0.34%	-0.28%	-3.17%
STKIN2010	SAUDI BASIC INDUSTRIES CORPORATION SJSC	104.06	↑	2.07%	1.39%	1.23%	1.56%	1.36%
STKINSLB	SCHLUMBERGER LIMITED.	73.58	↑	9.19%	7.22%	-1.80%	-7.42%	-4.00%
STKINNYSETOT	TOTAL SA	59.33	↑	7.33%	-2.25%	1.49%	2.70%	-1.17%
VIETNAM STOCKS								
PVN COMPANIES		By Market Capitalisation descending						
+	PVN 10	LAST		1M	2M	3M	6M	12M
DCM	CA MAU FERTILIZER	13,450	↓	-1.10%	6.67%	2.00%	-0.37%	12.72%
PXS	PETROLEUM EQUIPMENT ASSEMBLY & METAL STRUCTURI	8,880	↓	-13.79%	30.54%	19.55%	-6.14%	8.83%
PVD	PETROVIETNAM DRILLING & WELL SERVICES	27,450	↑	17.56%	24.53%	25.84%	3.76%	5.71%
DPM	PETROVIETNAM FERTILIZER & CHEMICALS	24,400	↑	13.49%	0.00%	0.94%	1.30%	1.04%
GAS	PETROVIETNAM GAS	124,600	↑	27.93%	22.21%	11.47%	0.00%	0.33%
PGD	PETROVIETNAM LOW PRESSURE GAS DISTRIBUTION	41,200	↑	9.87%	-2.34%	3.78%	-5.06%	-4.64%
NT2	PETROVIETNAM POWER NHONTRACH 2	33,100	↓	-1.19%	4.04%	7.51%	-9.60%	2.07%
PGS	PETROVIETNAM SOUTHERN GAS	37,000	↑	48.00%	8.23%	14.93%	11.89%	11.73%
PVS	PETROVIETNAM TECHNICAL SERVICES	27,600	↑	16.95%	29.67%	19.74%	0.61%	4.52%
PVT	PETROVIETNAM TRANSPORTATION	19,450	↑	3.18%	12.20%	14.68%	-1.69%	1.65%
+	OTHER COMPANIES	LAST		1M	2M	3M	6M	12M
CNG	CNG VIET NAM	31,200	↓	-2.19%	8.87%	4.83%	-7.35%	0.52%
PCT	CUU LONG PETRO GAS TRANSPORTATION	9,000	↓	-5.26%	3.26%	6.98%	-3.00%	11.76%
PVC	DRILLING MUD	11,000	↓	-12.00%	13.64%	22.22%	-2.30%	8.75%
PBP	PBP PETROVIETNAM PACKAGING	18,000	↑	7.14%	7.01%	-0.63%	-1.23%	-3.91%
PCE	PCE CENTRAL PETROVIETNAM FERTILIZER & CHEMICALS	11,200	↑	1.82%	-7.56%	5.31%	40.91%	8.75%
PTL	PETRO CAPITAL & INFRASTRUCTURE INVESTMENT	3,700	↓	-12.94%	11.26%	-4.50%	3.05%	-3.32%
PSD	PETROLEUM GENERAL DISTRIDUTION SERVICES	16,000	↓	-13.04%	3.37%	-0.56%	-5.52%	3.98%
PXI	PETROLEUM INDUSTRIAL & CIVIL CONSTRUCTION	2,450	↓	-2.00%	0.40%	4.18%	-9.85%	-8.13%
PXT	PETROLEUM PIPELINE & TANK CONSTRUCTION	4,500	↓	-1.75%	-4.18%	19.80%	3.90%	-10.91%
PVX	PETROVIETNAM CONSTRUCTION	2,300		0.00%	4.55%	-4.35%	0.00%	4.55%
PVE	PETROVIETNAM ENGINEERING CONSULTANCY	8,200	↓	-3.53%	11.84%	8.57%	-3.53%	11.48%
PCG	PETROVIETNAM GAS CITY INVESTMENT & DEVELOPMENT	12,500	↑	11.61%	31.76%	18.06%	-3.85%	16.67%
PET	PETROVIETNAM GENERAL SERVICES	11,200	↓	-5.08%	11.32%	6.00%	-6.42%	5.83%
PVG	PETROVIETNAM NORTHERN GAS	10,100	↑	29.49%	6.85%	5.80%	-1.37%	2.78%
PPE	PETROVIETNAM POWER ENGINEERING CONSULTING	13,800	↑	1.47%	1.49%	-3.60%	1.49%	3.31%
PPS	PETROVIETNAM POWER SERVICES	9,200	↑	4.55%	-3.30%	1.11%	-6.36%	3.64%
PSI	PETROVIETNAM SECURITIES INCORPORATED	4,000	↓	-2.44%	0.00%	0.00%	4.55%	-5.56%
PMB	PMB NORTH PETROVIETNAM FERTILIZER & CHEMICALS	9,800	↑	1.03%	-1.02%	0.00%	-15.38%	0.00%
PMP	PMP DAM PHU MY PACKAGING	18,300	↓	-1.08%	8.82%	0.00%	-4.24%	1.23%
PSE	PSE SOUTH-EAST PETROVIETNAM FERTILIZER & CHEMICAL	9,000		0.00%	-12.62%	0.00%	-5.13%	2.86%
PSW	PSW SOUTH-W PETROVIETNAM FERTILIZER & CHEMICAL	9,500	↓	-1.04%	6.67%	0.00%	4.12%	-4.69%

Stocks		Variation						
		LAST	1M	2M	3M	6M	12M	
PVB	PVB PETROVIETNAM COATING	19,700	↓	-3.43%	20.71%	0.60%	7.76%	11.43%
PVI	PVI HOLDINGS	38,000	↑	18.75%	-10.11%	10.90%	-0.87%	-1.96%
GSP	PVN GAS SHIPPING	13,500	↓	-3.57%	-3.45%	7.01%	-2.21%	6.96%
OTHER ENERGY COMPANIES		By Market Capitalisation descending						
BTP	BA RIA THERMAL POWER	11,900	↓	-0.83%	15.38%	0.97%	-3.33%	-4.32%
TCS	CAOSON COAL	5,000	↑	4.17%	20.00%	-9.09%	4.88%	-6.00%
CJC	CENTRAL ELECTRICAL MECHANICAL	23,500		0.00%	0.00%	0.00%	1.40%	0.00%
CHP	CENTRAL HYDROPOWER	25,500	↓	-3.59%	-2.94%	0.55%	-3.64%	5.12%
CLM	COALIMEX	16,100	↑	15.00%	2.94%	0.00%	-6.25%	-6.25%
HLC	HA LAM - VINACOMIN COAL	7,000	↓	-4.11%	-1.35%	2.78%	-67.27%	11.76%
PTS	HAI PHONG PETROLIMEX TRANSPORTATION	6,000	↓	-1.64%	1.67%	-6.25%	-4.76%	14.04%
DRL	HYDRO POWER - POWER NO.3	51,300	↑	1.18%	7.76%	6.93%	-5.06%	5.13%
KHP	KHANH HOA POWER	9,950	↑	1.53%	0.10%	2.62%	2.00%	-3.93%
MDC	MONG DUONG COAL	4,300	↓	-6.52%	-8.00%	-9.09%	8.00%	5.17%
NBP	NINH BINH THERMAL POWER	13,900	↓	-6.08%	-3.90%	-0.65%	1.31%	-7.82%
PMS	PETROLEUM MECHANICAL	16,400	↑	7.89%	-10.06%	-3.98%	-24.90%	11.37%
PLX	PETROLIMEX	88,500	↑	18.00%	20.97%	1.31%	6.37%	
PGC	PETROLIMEX GAS	17,200	↑	9.55%	2.28%	2.68%	0.00%	11.72%
PJC	PETROLIMEX HANOI TRANSPORTATION	30,000		0.00%	-0.33%	5.24%	-9.97%	28.00%
PEN	PETROLIMEX INSTALLATION NO.3	10,000	↓	-15.97%	-37.37%	-2.06%	20.44%	4.94%
PIT	PETROLIMEX INTERNATIONAL TRADING	6,000	↓	-5.51%	2.42%	-8.01%	-0.58%	-10.39%
PLC	PETROLIMEX PETROCHEMICAL	23,400	↓	-6.40%	0.00%	-16.39%	0.00%	7.46%
PJT	PETROLIMEX TANKER	14,000	↓	-2.78%	1.41%	-0.70%	0.37%	-4.76%
PPY	PETROVIETNAM OIL PHU YEN	21,900	↓	-19.19%	20.44%	59.57%	-14.62%	0.00%
PPC	PHA LAI THERMAL POWER	20,500	↓	-9.89%	-3.40%	13.22%	-12.09%	-1.75%
PGI	PJICO INSURANCE	19,800	↓	-12.78%	22.70%	-5.13%	-1.49%	2.75%
TV1	POWER ENGINEERING CONSULTING 1	18,000	↑	0.56%	0.56%	-4.30%	14.53%	0.00%
TV2	POWER ENGINEERING CONSULTING 2	176,700	↑	25.50%	-1.19%	-12.52%	-16.82%	-4.39%
TV3	POWER ENGINEERING CONSULTING 3	36,800	↑	21.85%	7.09%	-16.07%	-8.16%	-23.82%
TV4	POWER ENGINEERING CONSULTING 4	18,400	↑	22.67%	11.11%	-1.46%	-13.21%	0.00%
PSC	SAI GON PETROLIMEX TRANSPORTATION	15,300	↑	27.50%	3.45%	-1.69%	-12.66%	4.00%
S4A	SESAN 4A HYDROELECTRIC	23,600	↑	2.61%	4.55%	-3.72%	1.46%	11.43%
TBC	THAC BA HYDROPOWER	23,600	↓	-1.67%	-2.83%	-1.00%	1.96%	-5.24%
TMP	THAC MO HYDROPOWER	32,000	↓	-4.48%	0.00%	1.52%	-14.58%	-7.89%
EMC	THU DUC ELECTRO MECHANICAL	14,100	↓	-11.60%	18.15%	5.47%	6.85%	15.85%
TVD	VANG DANH COAL	5,200	↓	-5.45%	10.00%	-5.66%	-3.51%	-4.69%
VIP	VIET NAM PETROLEUM TRANSPORT	7,990	↓	-1.96%	0.62%	18.25%	-2.54%	8.26%
TC6	VINACOMIN - COC SAU COAL	5,100	↑	13.33%	7.14%	0.00%	-4.44%	-14.55%
TDN	VINACOMIN - DEO NAI COAL	6,000	↑	3.45%	38.10%	0.00%	4.76%	-5.66%
THT	VINACOMIN - HA TU COAL	6,500	↑	4.84%	-3.13%	-1.54%	-2.86%	0.00%
NBC	VINACOMIN - NUI BEO COAL	8,000	↑	5.26%	22.58%	-7.46%	8.62%	-5.56%
TMB	VINACOMIN NORTHERN COAL	7,900	↓	-1.25%	0.00%	0.00%	-28.57%	0.00%
CTT	VINACOMIN-MACHINERY	11,900	↓	-18.49%	19.67%	62.67%	17.67%	-10.26%
VSH	VINH SON - SONG HINH HYDROPOWER	16,950	↓	-1.45%	1.18%	3.03%	-6.63%	6.62%
VTO	VITACO - VIETNAM TANKER	8,800	↑	0.57%	6.97%	13.45%	-2.08%	5.34%

IFRC RESEARCH – ENERGY MONTHLY REPORT

Thien Son Plaza Office 3.12,
800 Nguyen Van Linh St,
Dist 7, HCM City, VIETNAM

Phone +84 (028) 54 17 13 28
Fax +84 (028) 54 17 13 65

www.ifrcindex.com
www.vnxindex.com